



## Operation & Safety Instructions

**Including important  
information about Nicotine  
containing e-liquids.**



## Safety Information

Please read the following information carefully and retain this booklet for future reference.

**IT IS ESSENTIAL THE SABRE NUVO BATTERY IS CHARGED ONLY USING THE SUPPLIED SABRE NUVO MICRO USB CHARGING CABLE AND A COMPATIBLE POWER SOURCE. USE OF ANY NON SUPPLIED ACCESSORIES IS NOT RECOMMENDED AND MAY CAUSE DAMAGE TO THE PRODUCT AND POTENTIALLY CAUSE INJURY.**

**SABRE NUVO SHOULD NOT BE LEFT UNATTENDED WHILST CHARGING. AFTER CHARGING WE RECOMMEND DISCONNECTING AND DEACTIVATING THE BATTERY UNTIL READY FOR USE.**

Please ensure that your Sabre Nuvo Device and e-liquids are stored in a cool dry place whenever possible. If carrying the device in a pocket or bag, ensure it is turned off and avoid contact with other metallic items.

Keep your Sabre Nuvo device and e-liquids out of the reach of children. multiVAPE e-liquids contain nicotine which is an addictive substance and should be handled with care, avoiding any contact with skin. Refer to warning labels on multiVAPE e-liquid bottles before use.

## Contents

- 2: Nicotine Containing E-liquid Information Leaflet
- 5: Box Contents
- 6: Sabre Nuvo Components
- 7: Overview
- 8: Notes on Coils
- 9: Using Sabre Nuvo
- 13: Maintaining Your Sabre Nuvo
- 14: Technical Specifications
- 15: Troubleshooting
- 17: Safety
- 19: Possible Side Effects
- 20: Reporting Side Effects
- 21: E-Cigarettes and Children
- 21: Using Sabre Nuvo with Nicotine Containing E-liquid

## Information Leaflet

### Nicotine Containing E-Liquid

**Read all of this information leaflet carefully before you start using this product, because it contains important information for you.**

The bottle of e-liquid included with this Sabre Nuvo Kit is intended for adult smokers. This product is not recommended for non-smokers, young people under the age of 18 years, pregnant or breast feeding women and those experiencing general ill health.

#### **The bottle of e-liquid contained in this pack:**

- Contains 10ml of nicotine containing solution for use in electronic cigarettes.
- Contains a nozzle 9.4mm in length and 2.6mm in width to prevent leakage during use.

#### **INSTRUCTIONS FOR USE**

How to refill your electronic cigarette

Please refer to your electronic cigarette instructions on how to fill (see page 10).

Your bottle has a nozzle 2.6mm wide therefore before refilling please ensure the refill port of your electronic cigarette has an opening to accommodate this nozzle.

1. To open your bottle of e-liquid, press down on the lid while holding the bottle in your other hand. Twist the lid in a counter-clockwise direction until the lid is removable.



2. Carefully insert the nozzle of the bottle of e-liquid into the refilling port of your electronic cigarette and gently squeeze to fill the desired amount of e-liquid.



3. Replace the lid of the bottle as soon as you have completed filling.



4. Store your e-liquid out of reach and sight of children.

## **IMPORTANT INFORMATION ABOUT USING NICOTINE CONTAINING E-LIQUIDS**

**Before using nicotine containing e-liquids the user should read the following information carefully.**

### **Do not use nicotine containing e-liquids:**

- If you are allergic to nicotine or any of the other ingredients contained in the e-liquid (see manufacturer's label for full details).

### **Warnings and precautions**

Nicotine containing e-liquids are not recommended for:

- Non-smokers;
- Young people under the age of 18 years; Pregnant or breastfeeding women; as nicotine is known to cross the placenta and to be excreted in breast milk.
- Those experiencing general ill health; such as heart disease, stomach and duodenal ulcers, inflammation of the stomach or oesophagus (passage between the mouth and stomach), liver or kidney problems, long term throat disease or difficulty breathing due to bronchitis, emphysema or asthma;
- Those who have an over-active thyroid gland or have a phaeochromocytoma (a tumour of the adrenal gland that can affect high blood pressure);
- Those who have diabetes, as nicotine may affect your blood sugar levels.
- Those taking the following medication;
  - Theophylline (to treat breathing problems)
  - Ropinirole (to treat restless legs)
  - Clozapine (to treat schizophrenia)

### **Possible side effects**

If you inhale too much nicotine or use the product too much you may experience one or more of the following effects:

- Feeling faint;
- Nausea (feeling sick);
- Headache;
- Coughing;
- Irritation in the mouth or throat;
- Dizziness;
- Stomach discomfort;
- Hiccups;
- Nasal congestion;
- Vomiting (being sick);
- Chest palpitations;
- Abnormal heart rate.

If you experience any of these side effects, including any possible side effects not listed in this leaflet discontinue using the product. If the effect(s) continue after you stop use, consult your doctor or healthcare professional and bring this leaflet to their attention.

{The following statement is applicable to the UK only}

You can also report side-effects directly via the Yellow Card Scheme at [www.mhra.gov.uk/yellowcard](http://www.mhra.gov.uk/yellowcard).

By reporting side-effects you can help provide more information on the safety of this product.

### **Addictiveness and Toxicity**

Nicotine is highly addictive; and is therefore intended for adult smokers only.

Nicotine may be harmful or toxic if swallowed depending on the nicotine concentration of your product. If you accidentally swallow any of the e-liquid rinse your mouth out with water and then drink plenty of water. Call a POISON CENTRE or a doctor if you feel unwell.

If any e-liquid should come into contact with your skin wash with plenty of water.

Please refer to the product labelling for further details.

### **How to store you bottle of e-liquid**

Store below 25°C in a clean dry place. Keep the product out of the sight and reach of children and animals.

### **All multiVAPE e-liquids are proudly made in the UK on behalf of:**

Bluespur Limited  
159 Charles Street  
Leicester  
LE1 1LD  
United Kingdom

E-liquid manufactured by:  
Nerudia Limited, Wellington House, Physics Road, Speke  
Liverpool, L24 9HP, UK.

**This leaflet was revised: September 2017**



## **Box Contents:**

- Sabre Nuvo Battery: 2500mAh
- Sabre Nuvo Top Fill Tank: 2ml
- Sabre Nuvo 1.5 $\Omega$  Bottom Vertical MTL Coil \*
- Sabre Nuvo Micro USB charging cable
- Operation and Safety Instruction Manual
- 10ml bottle of multiVAPE Tobacco Leaf 12mg E-Liquid

\* Sabre Nuvo is sub-ohm compatible and when you are ready to experiment, our MTL coil at 1.0  $\Omega$  and our DL coil at 0.5 $\Omega$  can be purchased separately from your local multiVAPE stockist, or from our website:

**[www.multivape.co.uk](http://www.multivape.co.uk)**

Note: The lowest resistance coil the device can be used with is 0.2 $\Omega$ .

## Sabre Nuvo Components:

1. Top Fill Cap
2. Top Fill Tank Chamber & Droplet Window
3. Tank Base with Adjustable Airflow
4. Fire Button
5. OLED Display
6. 2-Way Navigation Button
7. Micro USB Charge Port
8. Removable Oval-Shaped Mouth Piece
9. Sabre Nuvo Battery Unit
10. MTL Coil 1.5 $\Omega$
11. MTL Coil 1.0 $\Omega$  (Sold Separately)
12. DL Coil 0.5 $\Omega$  (Sold Separately)



## **Overview:**

The Sabre Nuvo Kit is a compact, 2500mAh battery with a 2ml top fill tank capable of both MTL (Mouth to lung) or sub-ohm DL (Direct lung) vaping.

So what is the difference and why does it matter? Well, an often overlooked aspect of vaping, is how you choose to vape. Many won't give this a second thought, but a little knowledge can greatly improve your vaping experience.

### **MOUTH TO LUNG (MTL)**

Mouth to Lung vaping is very much as it sounds – you initially take the vapour into your mouth before inhaling to the lungs. Smokers and ex-smokers will already be familiar with this method as it is the way cigarette smoke is ordinarily inhaled. The sensation is subtle as vapour remains in the mouth for longer, so the flavour of the e-liquid is more apparent. This technique works best with tanks that use higher ohm coils (1.0Ω and above) and low battery strength (15W and below). It is possible to use the MTL draw technique when using a sub-ohm set-up but the vapour tends to become uncomfortably hot. The MTL technique has a number of advantages. Due to the shorter inhalations, e-liquid is vaporised at a much slower rate meaning your e-liquid consumption will be low. Also as it usually involves a lower battery power and higher nicotine strength e-liquid, this reduces the risk of the vapour becoming too hot and the prolonged exposure to the taste buds means the taste will be much more noticeable.

### **DIRECT LUNG (DL)**

Direct Lung vaping could be described like inhaling through a very wide straw. There is no mouth resistance; in that you inhale directly into the lungs and the draw can be much longer. A greater volume of vapour can be taken, generating more airflow and a lot more vapour. Consequently the DL technique can provide a much greater nicotine hit so lower nicotine strength e-liquids tend to be used with this method. More experienced vapers often claim this method enhances the flavour of their chosen e-liquid.



## Notes on Coils:

Coils should be changed regularly, coils can last a long time, but research has shown over time build up on the coil can cause unwanted substances, so we advise changing coils regularly to maintain the best possible taste and emissions. This applies to all coils.

Coil longevity will vary depending on a number of factors such as the type of e-liquid used and ingredients contained. Some flavours will reduce coil lifespan as will certain base ingredients, even similar flavours from different manufacturers can have a varied effect on coil longevity.

### IMPORTANT

New coils should always be primed prior to use. Priming the coil allows the wicking process to begin and prevents dry hits and coils burning out quickly.

To prime the coil supplied with Sabre Nuvo, simply place a few drops of e-liquid in each of the wicking holes on the sides and 2 drops into the top of the coil. This is particularly important if you are using high VG or pure VG e-liquids. (See Fig.4 Page 10)

If you manage to over-prime a coil you can flood the device. If this happens simply flick the device sharply (Fig.8 Page 10) a few times, this will help clear any excess liquid. With a new coil you may need to do this a few times as it beds in.

**Coil Characteristics:** By changing the coil, you can change how the Sabre Nuvo performs and in turn your vaping experience;

**1.5Ω MTL Coil** – Uses less e-liquid and battery capacity, allows for a tighter draw with cooler vapour production.

**1.0Ω MTL Coil** – Uses less e-liquid and battery capacity, allows for more discrete vaping, warmer vapour and enhances flavour.

**0.5Ω DL Coil** – Greater vapour production, increases nicotine hit enabling lower strength liquids to be used.



multiVAPE  
Sabre Nuvo  
1.5Ω MTL Coil



multiVAPE  
Sabre Nuvo  
1.0Ω MTL Coil



multiVAPE  
Sabre Nuvo  
0.5Ω DL Coil

## Using Sabre Nuvo:

Make sure to charge the battery before use as some batteries may not be fully charged out of the box. Follow Figs. 1-8 for full set up instructions.

### Battery Safety

Sabre Nuvo contains a 2500mAh Lithium-Ion battery. Exercise caution while using and storing your battery.

Do not dispose of with household waste, please recycle batteries where facilities exist, check with your local authority for recycling advice.

If storing for a long period of time, store with at least 40% charge.

**A complete charge cycle will take approximately 2.5 to 3 hours.**

During the charging process, the battery symbol will change to a lightning symbol.

### Safety Advice When Charging

When charging, take care not to force the Micro USB Charge Cable into the Charging Port. Insert it only far enough for the charge indicator light to come on. Connect the other end of the USB cable to a 3-pin USB plug adapter (2Amp/5V or less) or a computer USB port.

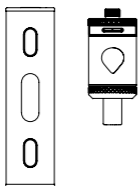
- **Only use the Sabre Nuvo Micro USB Charging Cable.**
- **DO NOT use high-powered phone adaptors.**
- **Never leave batteries to charge unattended.**
- **Always charge on a fireproof surface.**

After filling your tank and priming, a new coil may flood a few times as it beds in. This can cause gurgling or some leakage from the airflow. To clear this, hold the device and flick (Fig. 8) down sharply in a fluid motion a few times, this will clear any excess liquid and prevent leaking and eliminate any gurgling sensation.

### Assembly:

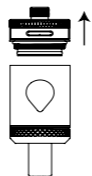
The Sabre Nuvo is precision engineered. All threading is designed to be lightly secured in place by hand and not overtightened which may cause damage.

Fig.1



Unscrew tank from battery

Fig.2



Unscrew base

Fig.3



Screw in new coil

Fig.4

Prime the coil by adding 2 drops of e-liquid to each wicking hole, and 2-3 drops down the centre of the coil

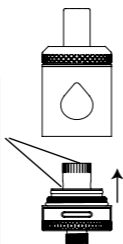


Fig.5

Unscrew Top Fill Cap

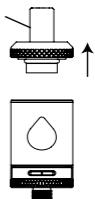
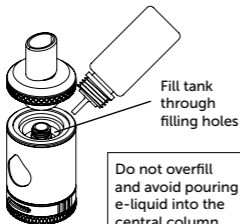


Fig.6



Fill tank through filling holes

Do not overfill and avoid pouring e-liquid into the central column

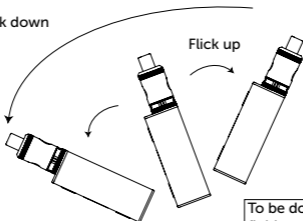
Fig.7



Allow to stand for 5 mins after filling with e-liquid.

Fig.8

Sharp flick down



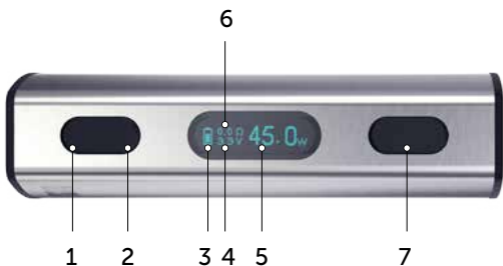
Flick up

To be done in one fluid motion.

## Using Sabre Nuvo Cont:

### Sabre Nuvo Functions

1. 2-Way Navigation Button (Down)
2. 2-Way Navigation Button (Up)
3. Battery Capacity
4. Output Voltage
5. Output Wattage
6. Coil Resistance
7. Fire Button



### Switching Sabre Nuvo on / off

Rapidly click the fire button 5 times (in less than 1.5 seconds) to turn on / off. Whilst turned off, the battery will not activate or fire the coil.

### Rotating the Display:

The Sabre Nuvo OLED Display can be rotated 180°. When the device is off, simply hold down the navigation buttons for 2 seconds.

### Pass Through Mode:

The Sabre Nuvo can still be used as normal whilst being charged via the Micro USB lead.

## Vaping

- Ensure that your battery has enough remaining charge to operate.
- Ensure that your tank is filled with a suitable quantity of e-liquid and that the coil is primed (Fig.4 Page 10)
- Use the navigation buttons to adjust the wattage to your desired setting
- Push and hold the fire button whilst at the same time inhaling through the mouthpiece.
- When you are finished inhaling, release the fire button and exhale.
- Use the adjustable airflow to tailor the tightness of the draw to your liking.
- If you experience any gargling flick the device sharply to clear (Fig.8 Page 10)

## Adjusting the Wattage / Voltage

Sabre Nuvo has both variable voltage and wattage modes to fine tune your vaping experience. To switch between these modes when the device is on, click the fire button 3 times.

Navigate up or down using the 2-way navigation button. A single depression will alter the setting by a single unit.

Alternatively, holding the 2-way navigation button will rapidly increase or decrease the setting until you click in the opposite direction, or press the fire button to stop.

## Locking the Navigation Buttons

Once the display is showing your desired setting, press and hold both sides of the 2-way navigation button for 4 seconds to lock in the setting. The display will read "lock" This prevents the setting from being accidentally adjusted in pockets or bags etc.

To unlock, press and hold both sides of the 2-way navigation button for 4 seconds.

## **Maintaining Your Sabre Nuvo:**

From time to time, your Sabre Nuvo Tank will need to be cleaned as e-liquid and condensation from the vapour leaves a residue inside the tank through use. To reduce a build up of residue, flick the device sharply to clear whenever you experience a gurgling sensation.

(Fig.8 Page 10)

### **To clean your Sabre Nuvo**

- Remove the base of the tank (including the coil).
- Remove the coil from the base and put to one side
- Rinse the tank chamber and mouthpiece in warm water (no soap or detergent), then allow to air-dry fully.
- Remove the oval mouthpiece then rinse and dry fully.

It is really important to keep your battery and tank connectors clean as a build-up of dried e-liquid and other detritus over time can cause connection problems.

### **To clean the battery and tank connectors**

- Ensure the device is turned off
- Use a wood / plastic cocktail stick or tooth pick to clear the connector and battery threads. Doing this will clear away any dirt or debris that may be preventing a good connection.
- Use some paper towel or a cotton bud to wipe away any leftover residue that may be left on the connector and battery threads.

### **WARNING: RISK OF DAMAGE OR INJURY**

**DO NOT USE METALLIC OBJECTS SUCH AS PINS OR NEEDLES TO CLEAN THE BATTERY CONNECTORS OR THREADING. DOING SO MAY CAUSE A SHORT AND COULD CAUSE DAMAGE TO THE DEVICE AND MAY CAUSE INJURY.**

**ALWAYS ENSURE SABRE NUVO IS TURNED OFF PRIOR TO CLEANING ANY PART OF THE BATTERY, THREADING OR CONNECTORS.**

## **Technical Specifications:**

### **Sabre Nuvo Battery**

- Dimensions: H:8.2cm x W:2.2cm x D:3.0cm
- Weight: 80g
- Material: Stainless Steel & ABS Polymer
- Power: 2500mAh Lithium-Ion
- Voltage: 2 - 8v
- Wattage: 5 - 45W
- 510 Connector Threading
- 2cm OLED Display
- Micro USB Charge Port
- Charge time: Approx. 2.5 - 3 hours
- Resistance range: 0.2 $\Omega$  - 3.0 $\Omega$

### **Sabre Nuvo Tank**

- Dimensions: H:4.6cm x W:2.2cm x D:2.2cm
- Weight: 48g
- Material: Stainless Steel & Pyrex
- Maximum capacity: 2ml
- Adjustable airflow
- 510 Removable oval shaped mouthpiece
- Top Fill cap
- Top Fill Tank Chamber
- 510 Connector Threading
- 1.5 $\Omega$  MTL Coil included

## **Troubleshooting:**

### **Sabre Nuvo Battery Not Working**

- First, check whether your battery hasn't been turned off accidentally. Rapidly click the power button 5 times (in less than 1.5 seconds) to turn on / off.
- Next, check whether the OLED Display lights up when you press the power button. If it doesn't, and the battery is not locked, check to see whether the battery needs to be charged.
- If the OLED Display does come on, but the battery doesn't fire the tank, check to see that all connections and threads are clean and free of any dirt or residue.
- Make sure the tank is finger-tight only, over-tightening may cause a short.
- If you haven't already done so, replace the coil in your tank and try again with the same battery.

### **Tank / Coil Producing A Burnt Taste**

- Make sure a new coil is properly primed (refer to fig. 4 Page 10) and set up correctly before use. E-liquids with thicker viscosities / higher VG contents will require additional priming.
- When in use make sure the tank does not run dry, if a coil is allowed to run dry the cotton inside the coil overheats or becomes burnt, this is referred to as a "dry hit" and will permanently taint the taste generated by the coil. Your coil may need to be replaced at this point.
- Avoid Mouth to Lung type inhalations if using Sub-Ohm / DL (Direct Lung) coils, this often results in a burnt taste due to the lack of airflow produced, effectively causing the coil to overheat and burn.
- Coils may fail at any time, replace regularly and especially if it has been in use for a prolonged period of time.



## Sabre Nuvo Tank Issues

### Gurgling Sensation or Leaking Whilst Vaping?

Nearly all gurgling and leaks are caused by liquid in the airflow, to clear this, flick the device sharply a few times (fig. 8 Page 10), if this does not fix the issue:

- Replace the coil particularly if it has been used for a prolonged period of time.
- Remove and check there is no excess e-liquid accumulating in the base of the tank.
- Check the coil is screwed in correctly.

### Error Messages

**Over 10s** – The device will display 'over 10s' and automatically cease output if the power button is held down for longer than 10 seconds.

**Atomizer Short** – If the battery detects a short-circuit in the tank it will display 'Atomizer Short'. Shorts normally occur if there is a problem with the 510 connector of the tank, or fault with the coil build. Over-tightening the attached tank can also show the error message.

**No Atomizer** - If the battery cannot detect the tank/atomizer it will display 'No Atomizer'. This error can also be caused by dirty connectors/threads, or a problem with the fitted coil.

**Atomizer Low** - If the atomizer has a resistance below  $0.2\Omega$  the device will display 'Atomizer Low'. This can also be caused by a short in the coil  
(See Atomizer Short above).

**Protection** - If the device detects that there is too much current running through the device it will show 'Protection'. This is normally due to using too high a wattage with too low a battery capacity. Lowering your wattage or charging your device will help this. If this doesn't help please contact our customer service team.

**Power Low** - If the battery has been drained too low the device will display 'Power Low'. Charging the battery or lowering the wattage should resolve this.

**Lock** - If the device battery has been over-discharged 'Lock' will display. To fix this simply charge your battery.

## **Safety:**

Sabre Nuvo is fitted with many built-in safety features, including overcharge protection, over-discharge protection and battery vents (USB).

Should, for any reason, the device becomes excessively hot, stop using the device immediately and allow to cool. Contact our customer service team for further assistance.

- Do not use high-powered phone adaptors greater than 2Amp/5V
- Never leave a battery to charge unattended.
- Always charge on a fireproof surface.
- Always use the Sabre Nuvo Micro USB Charging Cable
- If carrying the device in a pocket or bag, ensure it is turned off and avoid contact with other metallic items.
- Keep your Sabre Nuvo device turned off when not in use and always keep e-liquids out of the reach of children.

**Failure to follow the supplied safety instructions could result in personal injury or damage. Users of the Sabre Nuvo do so at their own risk. Neither multiVAPE, nor its retailers, assume any responsibility or liability associated with the use or misuse of the device. multiVAPE products are intended for adult use and consumption only.**

**Keep this booklet in a safe place for further reference.**

Do not drop, deform, bend, crush, puncture, incinerate, microwave, shred, paint, or insert foreign objects into the battery.

Do not clean the device other than as instructed in this manual.

Do not attempt to repair or modify the battery or tank yourself.

Use caution when handling the device. The coil will become very hot through use, so direct contact with the coil during, or just after use should be avoided.

Never leave your device unattended while it is charging, or while the coil is still hot.

## **Medical Related Questions or Concerns**

If you have any questions or concerns about whether using an electronic cigarette is right for you, we strongly recommend you discuss any concerns or questions with your doctor before use.

### **Sabre Nuvo & MV E-Liquids are not recommended for:**

- Non-smokers;
- Anyone who is allergic to nicotine or any of the other ingredients contained in the e-liquid (see manufacturer's) label for full details.
- Young people under the age of 18 years; Pregnant or breastfeeding women; as nicotine is known to cross the placenta and to be excreted in breast milk.
- Those experiencing general ill health; such as heart disease, stomach and duodenal ulcers, liver or kidney problems, long term throat disease or difficulty breathing due to bronchitis, emphysema or asthma;
- Those who have an over-active thyroid gland or have a phaeochromocytoma (a tumour of the adrenal gland that can affect high blood pressure);
- Those who have diabetes, as nicotine may affect your blood sugar levels.
- Those taking the following medication;
  - Theophylline (to treat breathing problems)
  - Ropinirole (to treat restless legs)
  - Clozapine (to treat schizophrenia)

**Stopping smoking or cutting down slows your metabolism. Your doctor may need to change the dose of these medicines.**

## **Possible side effects:**

You may experience unwanted effects as you reduce the amount of nicotine in your body, either by stopping smoking or using your electronic cigarette or vaping products. These effects include:

- Irritability or aggression
- Increased appetite or weight gain
- Feeling low
- Urges to smoke (craving)
- Anxiety
- Night time awakening or sleep disturbance
- Restlessness
- Lowering of heart rate
- Poor concentration

If you inhale too much nicotine or use the device too much you may experience one or more of the following effects:

- Feeling faint;
- Nausea (feeling sick);
- Salivation
- Headache;
- Coughing;
- Irritation in the mouth or throat;
- Dizziness;
- Stomach discomfort;
- Diarrhoea;
- Sweating;
- Hearing Disturbance
- Hiccups;
- Nasal congestion;
- Vomiting (being sick);
- Chest palpitations;
- Abnormal heart rate.
- Weakness

If you experience any of these side effects, including any possible side effects not listed in this leaflet discontinue using the device. If the effect(s) continue after you stop use, consult your doctor or healthcare professional and bring this booklet to their attention.

## **Addictiveness**

Nicotine is highly addictive; and is therefore intended for adult smokers only.

## **Reporting Side Effects:**

You can help to make sure that electronic cigarette products remain as safe as possible by reporting any unwanted side effects via the internet at;

**[www.yellowcard.mhra.gov.uk](http://www.yellowcard.mhra.gov.uk)**

Alternatively, you can call;

**Freephone 0808 100 3352**

(available from 10 a.m. to 2 p.m. Mondays to Fridays)

Or fill in a paper form available from your local pharmacy.

## **E-Cigarettes and Children:**

Always keep Sabre Nuvo and MV E-Liquids out of the sight and reach of children and dispose of carefully.

Sabre Nuvo and MV E-Liquid products have a number of small components which may pose a choking hazard if a child attempts to ingest them.

Nicotine can be very dangerous to small children and can sometimes be fatal. Nicotine ingestion by a child may cause severe poisoning.

If your child accidentally uses, sucks on, ingests or chews on a component which contains e-liquid, or comes into contact with e-liquid, you should take them to your nearest Accident and Emergency department immediately.

Ensure that you take the e-liquid packaging and this booklet with you.

## **Using your Sabre Nuvo with nicotine-containing e-liquid:**

If you choose to use Sabre Nuvo with nicotine containing e-liquid, you should refer to the packaging of your chosen e-liquid for all specific health warnings and usage instructions.

## **Nicotine is a highly addictive substance and is toxic if swallowed.**

E-liquid is available in a number of different nicotine strengths; you should always check the strength of any new e-liquid before you fill your Sabre Nuvo Tank.



Award winning e-liquids from  
[www.multivape.co.uk](http://www.multivape.co.uk)



**MENTHOL MIST**



**PEACH MANGO**



**WILD RAINFOREST**



**VANILLA SKY**



**BLACK CHERRY**



**APPLE JACK**



**STRAWBERRY FIELDS**



**MENTHOL BLUE**



**TOBACCO LEAF**



**BUBBLEGUM FUN**



**TOBACCO BLEND**



**ORANGE ZEST**

**Currently Available in**

**6mg**

**12mg**

**18mg**



**E-LIQUIDS  
PROUDLY MADE  
IN THE UK**



## **Registered Business Address**

Bluespur Limited  
159 Charles Street  
Leicester  
LE1 1LD  
United Kingdom

## **Customer Service**

0845 226 85 84

**[www.multivape.co.uk](http://www.multivape.co.uk)**

